

Leaching



Milling



Flotation



Leaching



Process
Optimisation



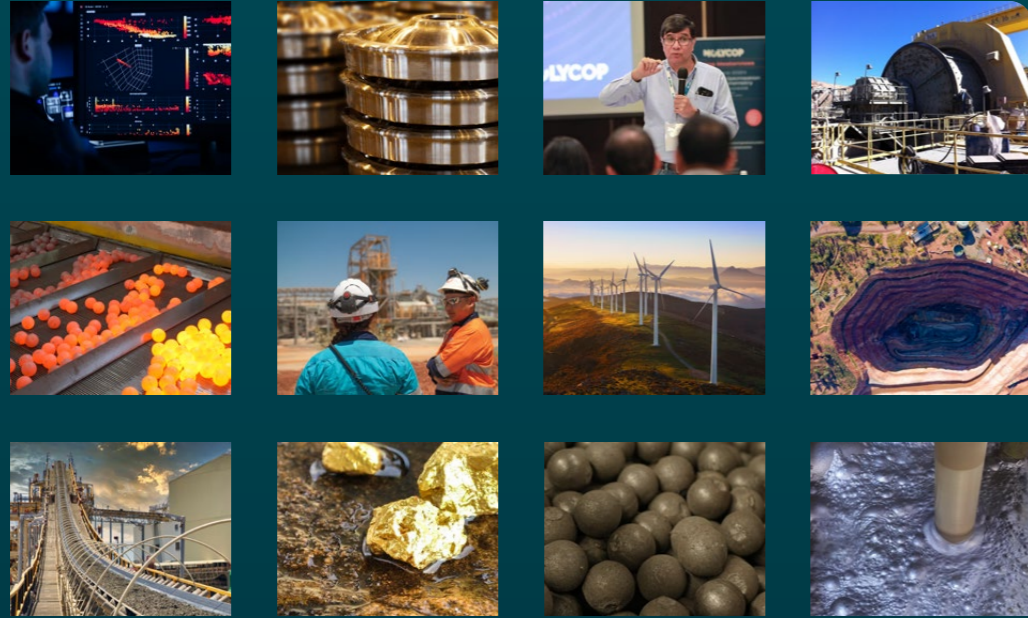
Consulting
& training



Engineered



A **tego** company



Progress Together

› At Molycop, we partner with our customers to drive efficiency, profitability and sustainability across the mining, mineral processing and rail sectors.

Our comprehensive range of solutions empowers mining operators to unlock performance gains across their entire operations. From high-performance grinding media and advanced milling circuit solutions that optimise comminution operations, to expert flotation and leaching services that maximise mineral recovery, we deliver results that make a tangible difference.

We are committed to continuous improvement – and to improving the performance of every operation we support. Our process optimisation services combine smart control systems and cutting-edge AI visualisation and analytics to give our customers the tools and insights they need to achieve their goals.

Beyond mineral processing, our precision engineered solutions, including robust rail and industrial products, address the needs of critical rail and infrastructure projects.

With our leading technology, reliable global and regional supply chains, and solutions-oriented approach, we partner with our customers to drive operational excellence and sustainable performance – delivering better for all.

Solutions

Molycop provides a range of innovative solutions that enhance mineral processing performance, improve operational efficiency and support safer, more sustainable mining operations.

Milling



Molycop's milling solutions maximise efficiency and minimise downtime so customers achieve peak operating performance immediately and over sustained periods. Our range of mining consumables is supported by measurement and control, analytics, and consulting and training services so operations can fully leverage the Molycop solutions available to them.



Flotation



By combining high-performance collector, frother and modifier chemicals with smart instrumentation, OreVia Process Characterisation and Smart Process Control, Molycop's flotation solutions enable mining operators to optimise mineral recovery, driving measurable improvements in flotation circuit efficiency and profitability.



Leaching



Customers achieve superior leaching performance with Molycop's range of leaching instrumentation and expert-led solutions. By integrating smart instrumentation, Smart Process Control, data analytics and consulting services, Molycop gives customers the tools and expertise they need to optimise performance and improve mineral recovery.



Process Optimisation



Molycop's process optimisation solutions combine consumables, smart instrumentation and the StarCS suite – including MillStar, FloatStar and LeachStar – with advanced analytics, data visualisation and expert consulting services. Together, these capabilities give mineral processing operations the opportunity to achieve long-term improvements in recovery and profitability.



Consulting and Training



With years of collective experience as a foundation, Molycop's industry-leading experts deliver consulting services and training courses, both onsite and on-demand, to improve the performance of customers' operations and upskill their staff.



Engineered



Backed by over a century of expertise, Molycop's engineered solutions keep Australia's rail and industrial sectors moving. From heavy-haul and passenger rail wheels to axles, track wheels, gear blanks and anode pins, our rail and niche engineered solutions are designed to optimise performance, minimise maintenance and maximise operational reliability.



Integrated leaching solutions for consistent performance

By integrating advanced instrumentation, data-driven analytics and intelligent process control, Molycop delivers leaching solutions that enhance recovery, optimise reagent use and bring greater stability and visibility to gold processing operations.

> In modern gold processing operations, leaching performance is defined by precision, control and visibility. Variations in chemistry, ore characteristics and circuit conditions can quickly impact recovery and operating costs.

Molycop addresses these challenges with a fully integrated leaching solution that combines instrumentation, analytics and expert support to help operators achieve consistent, high-performance outcomes.



Cynoprobe delivers fast, reliable and accurate real-time monitoring of cyanide concentrations.

Smart instrumentation for real-time control

Accurate, real-time measurement is essential for effective leaching performance. Molycop's range of smart instrumentation provides continuous monitoring of key process variables, enabling operators to maintain optimal conditions in leach tanks and downstream units. These technologies deliver the visibility needed to respond quickly to changes in ore feed and operating conditions, improving both efficiency and recovery outcomes.

Advanced control with LeachStar

Molycop's solutions enable precise management of critical leaching parameters such as cyanide concentration, and oxygen and pH levels. Molycop's LeachStar control suite is integrated within broader control environments and applies advanced algorithms and real-time data analysis to automatically optimise circuit performance. This reduces reagent consumption, improves safety and enhances overall process stability.

Reduce variability with General Control Services

Beyond automation platforms, Molycop's General Control Services provide the engineering, configuration and optimisation support required to align control strategies with plant objectives. By ensuring systems are correctly implemented and continuously refined, these services help operators maintain stable performance even as ore conditions or throughput requirements change.

Data-driven insight with analytics and modelling tools

Molycop complements its instrumentation and control systems with advanced analytics capabilities. VIP Platform and Molycop Tools enable operators to visualise process performance, test scenarios and identify optimisation opportunities. Together with Molycop's Mineral Analysis



Services, which provide detailed ore characterisation and laboratory insights, these tools provide a deep understanding of leach kinetics and recovery potential.

Expert support across the leaching lifecycle

Molycop's approach extends beyond technology to include specialist consulting and technical services. From leach kinetics studies to plant optimisation support and start-up assistance, Molycop experts work alongside operations to refine reagent strategies, improve circuit design and enhance long-term performance.

Improve recovery and efficiency

By integrating measurement, control and analysis into a single, connected framework, Molycop helps leaching operations move beyond reactive management toward proactive optimisation. The result is improved gold recovery, reduced operating costs and a more stable, predictable processing environment.

Molycop's integrated leaching solutions enable operators to turn data and process insights into tangible, sustained performance gains across the entire circuit.

Molycop Solutions



Increase throughput by integrating measurement, control and analysis in a connected framework.



Increase recovery and efficiency with smart instrumentation for real-time control.



Improve energy efficiency with expert support to optimise reagent use and the gold recovery process.

Products and services for leaching processes

Molycop provides leaching instrumentation and services designed to improve gold recovery, streamline reagent efficiency and enable more consistent, controlled plant performance.

Smart Instrumentation

Molycop's extensive range of leaching instrumentation provides real-time data for precise monitoring and control of leaching processes:

- **Cynoprobe:** Designed specifically for gold mining operations, Cynoprobe, from Mintek, delivers fast, reliable and accurate real-time monitoring of cyanide concentrations. The instrument reduces cyanide overdosing, lowering reagent costs by up to 20% without affecting gold recovery.
- **C² Meter:** Also from Mintek, C² Meter online carbon measurement instrumentation improves gold recovery by optimising carbon movement control and carbon concentration. It measures carbon concentration in a pulp continuously and accurately, and reduces carbon losses through early detection of carbon screen leakage.

Smart Process Control

Molycop partners with Mintek to provide Smart Process Control systems for customers:

- **LeachStar:** An advanced control suite designed specifically for gold circuits. LeachStar incorporates leading technology to optimise the performance of gold circuit process units, including thickeners, leaching circuits and carbon circuits.
- **General Control Services:** Integrate with advanced process control solutions to optimise plant operation. Molycop's comprehensive range of services is customisable to meet the needs of each circuit.

Analytics services

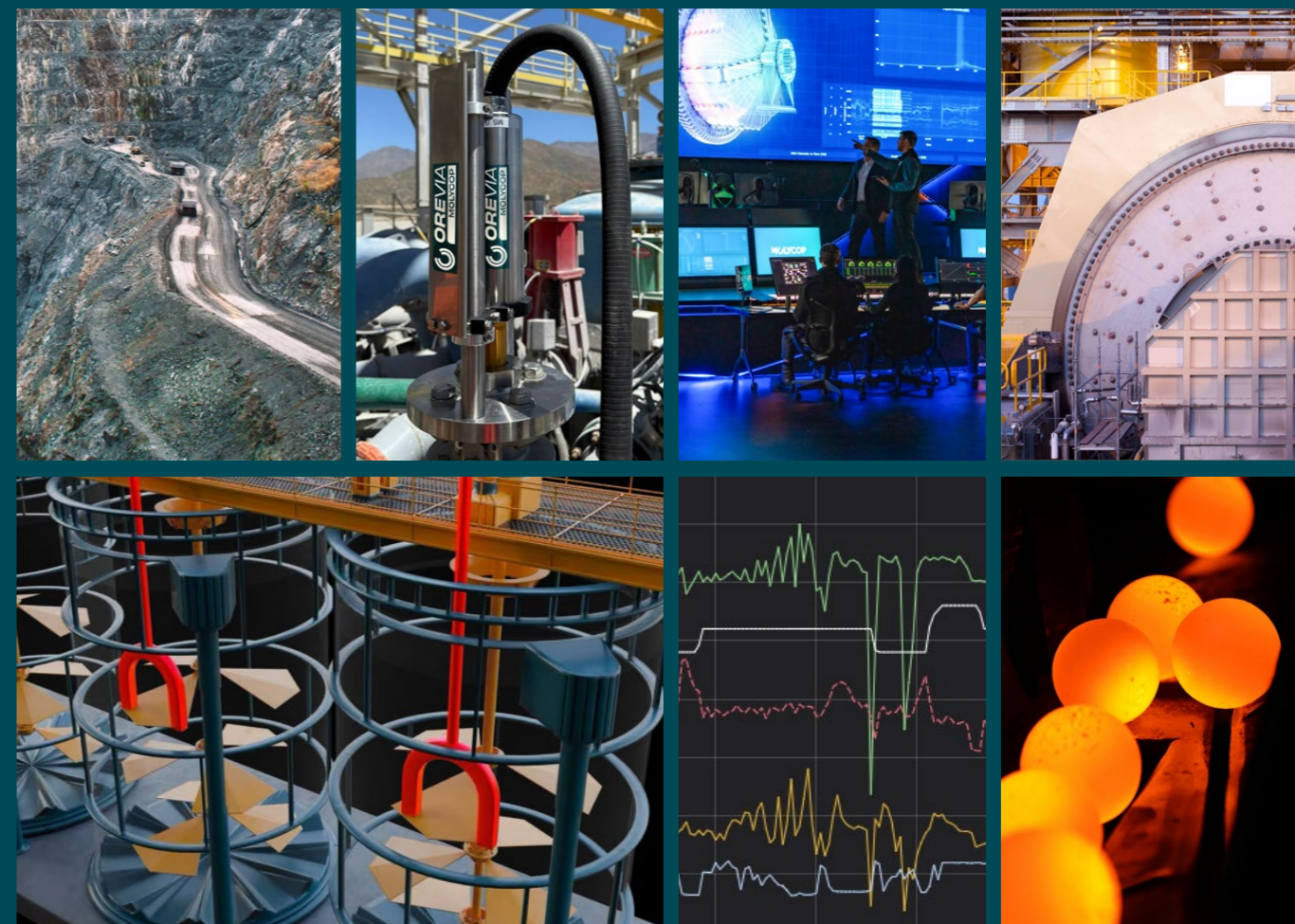
Molycop supports data-driven optimisation with its suite of digital and analytical services:

- **Molycop VIP Platform:** Centralises operational data, providing real-time visibility and advanced analytics to improve decision-making across leaching operations.
- **Molycop Tools:** Provides customers with in-depth insights to continuously improve leaching processes. Molycop Tools offers simulation and modelling capabilities, enabling operators to predict performance, test scenarios and optimise processes with confidence.
- **Mineral Analysis Services:** Deliver detailed insights into ore characteristics through laboratory testing and mineralogical assessment, helping operations refine processing strategies, improve recovery and respond effectively to changing ore conditions.

Consulting and Training

Molycop equips mining professionals with the skills they need to monitor, model and maximise the performance of their leaching processes:

- **Consulting services:** Using Molycop's **gold leach kinetics** analysis service, customers are guided through the process of enhancing gold recovery. By analysing critical factors such as pre-oxidation benefits and leach circuit adjustments, customers will maximise kinetics and reduce cyanide consumption.
- **Training services:** Upskill members of staff by equipping them with the skills and certifications they need to reach their potential.



Molycop's full range of Products and Services:

Milling	Flotation	Leaching	Process Optimisation	Consulting and Training	Engineered
Grinding Media	Chemicals	Smart Instrumentation	Smart Process Control	Consulting	Rail Wheels
Bolts	Smart Instrumentation	Smart Process Control	Consulting and Training	Training	Axles
Smart Instrumentation	Process Characterisation	Consulting and Training			Track Wheels and Gear Blanks
Process Characterisation	Smart Process Control				Anode Pins
Smart Process Control	Consulting and Training				
Consulting and Training					

For Molycop's Solutions in detail, visit us online:



MOLYCOP

A *tega* company

Visit Molycop's website or contact the sales team for more information.



molycop.com

© Molycop. All rights reserved 2026.

This publication has been prepared by Moly-Cop Global Holdings Inc. on its behalf and as agent for each of its related companies. All information contained in this publication is subject to change, replacement and/or modification at any time, without notice. Moly-Cop Global Holdings Inc. expressly disclaims all warranties, whether expressed or implied, oral or written, including any implied warranty of merchantability, fitness for a particular purpose, non-infringement, or other warranties arising from course of dealing, course of performance, usage of trade, or otherwise. The information is provided on an "as is" and "as available" basis. The information is provided for informational purposes only and Moly-Cop Global Holdings Inc. does not warrant the accuracy of any information or that the information will be error-free. Users of this publication are responsible to verify the accuracy and completeness of all information. Moly-Cop Global Holdings Inc. shall have no liability for any losses or damages of any kind arising out of or resulting from this publication, its contents and any use thereof.

Photographs shown are representative only of typical applications and are current as of May 2026. This publication is not an offer to trade and shall not form any part of the trading terms in any transaction.

Reproduction in whole or in part, in any form or medium without the express written permission of Moly-Cop Global Holdings Inc. is prohibited. All images and content, trademarks or registered trademarks are the property of Moly-Cop Global Holdings Inc.